

Low Voltage Overhead Lines

Earthing and Short - Circuit Equipment

SAFETY CATALOGUE

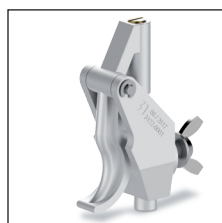
Low voltage overhead lines

Mod. ELBT-PAT/CC

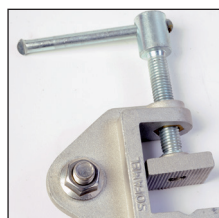
Earthing and short-circuit equipment for low voltage overhead lines. The main aim for its installation is operator's protection against an accidental commissioning or possible voltage return during repair operations.

The PEBT clamp is installed on the bare conductor by leaning it on this one and pressing downwards. The clamp mechanism guarantees a permanent and steady contact.

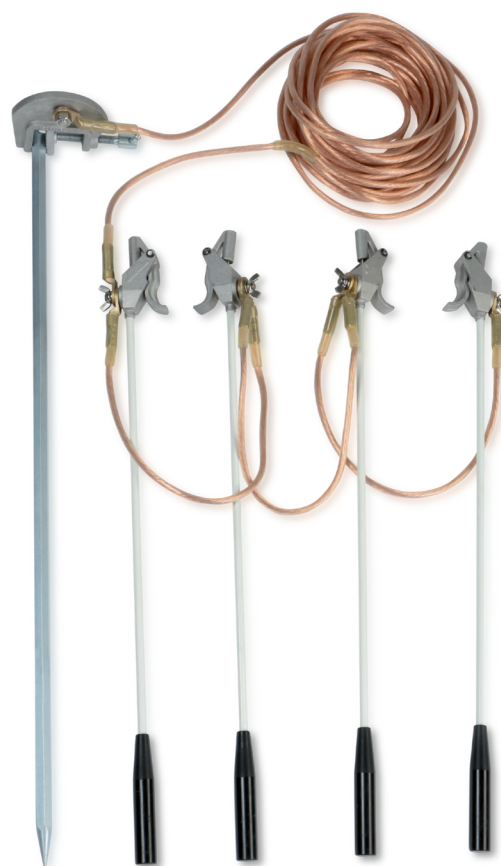
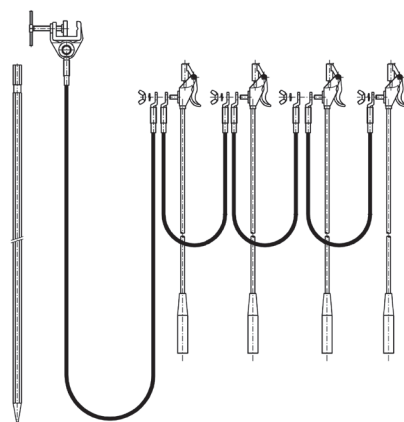
According to IEC 61230 standard.



PEBT
Low voltage clamp



TT-38A
Earthing lathe



Composed of:

- 4 PEBT spring clamps with 70 cm poles for cylindrical conductors with diameter between 3 and 18 mm.
- 3 copper cables with PVC insulation of 16 mm² section and 0.6 m long.
- 1 copper cable with PVC insulation of 16 mm² section and 15 m long.
- 1 TT-38A milling earthing lathe.
- 1 earthing rod.
- 2 nylon bags to store and transport the equipment.

Code	Ref.	Short circuit current Max. ICC
658120	ELBT-PAT/CC	4 KA/1s

