

Fluke TruTest™ Data Management and Reporting Software

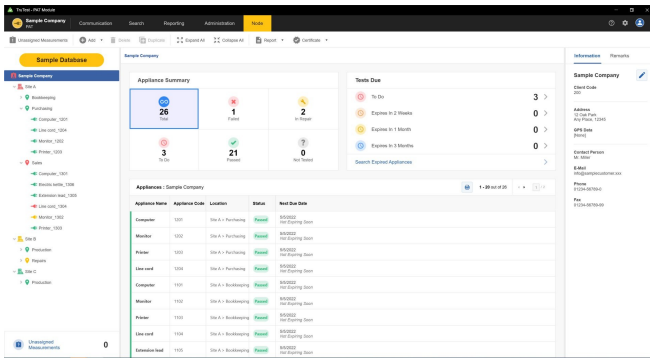


Key features

- Easily manage measurement data
- Quickly create test certificates and reports
- Free updates for 5 years after installation
- Easy data collection and database transfers
- Intuitive user interface

Product overview: Fluke TruTest™ Data Management and Reporting Software

Download your [free demo software](#), or get the latest software version by visiting the [TruTest Software Download](#) page.

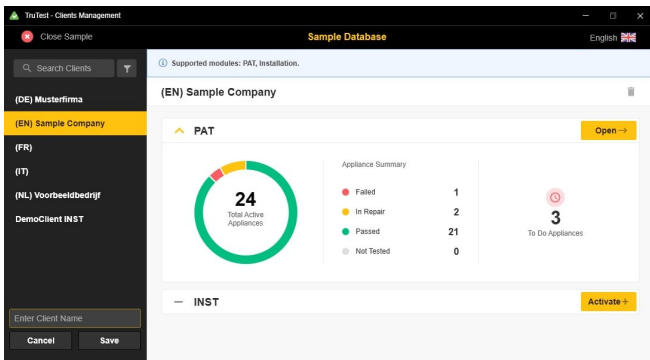


View at-a-glance pass/fail test results

The easy-to-use data management solution

Fluke TruTest Software is designed to eliminate the hassle associated with traditional electrical system data management and reporting. Whether you are testing fixed wire installations, or appliances in an office, verifying repairs in a workshop, or performing annual inspections proper data management is critical for producing easy-to-understand reports for clients. Compatible with a growing list of Fluke and Beha-Amprobe test and measurement devices TruTest Software allows you to quickly and easily import measurement results directly from your test instruments, manage files transferred from instruments, or manually enter data as needed.

With a streamlined user interface and intuitive workflow, measurement data can be easily formatted into printable test certificates and reports complete with your company logo and electronic signature.



Quickly and easily manage client and site data

Streamlined data management

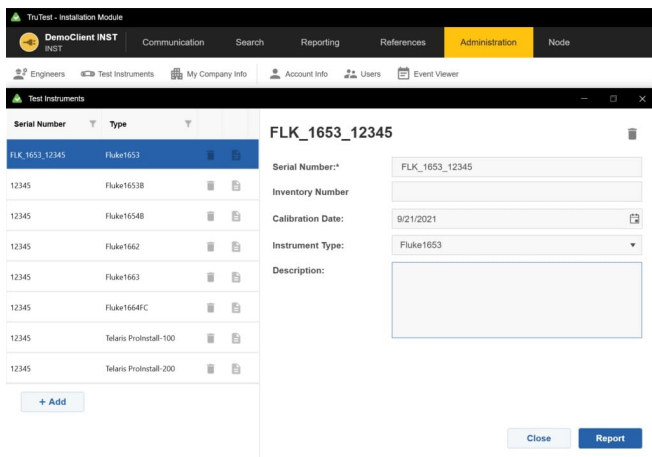
Manage test results, client and site data with ease, and create reports quickly using the intuitive user interface and custom-report builder.

Create custom auto-tests

Choose from pre-defined automatic test codes, or create your own to ensure technicians gather the right data at the right site.

Dashboard interface

Live on-screen intuitive dashboard interface allows the user to see the status of all their clients instantly and navigate to further levels of detail if desired.



Fluke TruTest is compatible with a variety of test and measurement instruments

Compatibility

TruTest™ is compatible with a growing list of Fluke and Beha-Amprobe test instruments including the following:

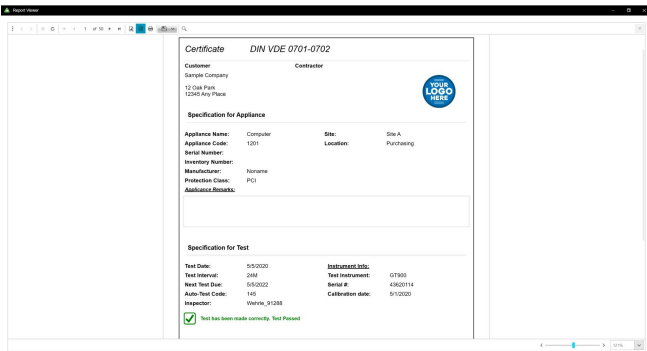
Portable Appliance Testers

- Fluke 6500
- Fluke 6500-2
- Beha-Amprobe GT-600
- Beha-Amprobe GT-650
- Beha-Amprobe GT-800
- Beha-Amprobe GT-900

Installation Testers

- Fluke 1653
- Fluke 1653B
- Fluke 1654B
- Fluke 1662
- Fluke 1663
- Fluke 1664 FC
- Beha-Amprobe ProInstall-100
- Beha-Amprobe ProInstall-200

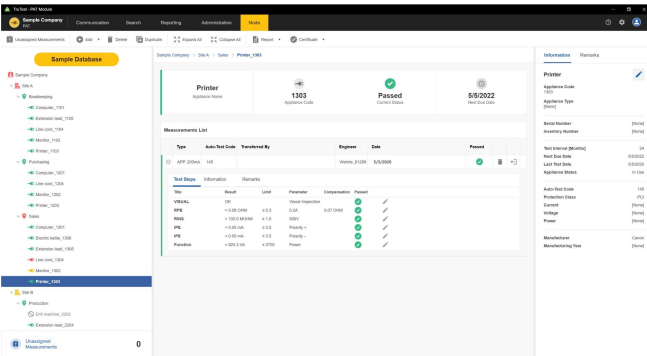
Databases from the Fluke DMS Software or Beha-Amprobe ES Control software can also be converted and transferred to the TruTest Software platform*. Microsoft Access Runtime 2016 is required for the DMS/EsControl database conversion.



Quickly produce easy-to-understand test certificates and reports

Comprehensive reporting

Fluke TruTest Software simplifies the reporting process so you can produce easy-to-understand test certificates and reports as quickly as possible, saving you time and money. A growing list of regional reports including DIN VDE 0701-0702, ÖVE/ÖNORM E 8701, SNR 462638, and NEN3140. All of these reports are available at the touch of a button, and a pre-configured international template ensures that no matter your location TruTest Software has you covered.



Tree topology

Hierarchical tree topology is used to represent clients, sites, locations and appliances, making it ideal for use in larger networks while allowing you to maintain testing and reporting flexibility. Each element is presented as a single tree node and the properties of each node are presented after selection. Tree topology can be maintained by adding nodes, deleting nodes, duplicating nodes, duplicating subtrees and node editing.

Specifications: Fluke TruTest™ Data Management and Reporting Software

```
div.clickability table.specs-table-1 tbody tr td { text-align: center !important; }
div.clickability table.specs-table-1 tr td:first-child { text-align: left !important; }
div.clickability table tr td ul { padding-left: 15px; margin: 0; }
div.clickability h3 { margin-top: 30px; }
```

Function	Demo	Lite	Advanced
Database structure (Local standalone or server based)	Local	Local	Local

Portable Appliance Tester (PAT) module	•	•	•
Portable Appliance Testers supported	Fluke 6500, Fluke 6500-2, Beha-Amprobe GT-600, Beha-Amprobe GT-650, Beha-Amprobe GT-800, Beha-Amprobe GT-900		
Maximum addable clients	1	2	Unlimited
Maximum addable sites/client	2	5	Unlimited
Maximum addable locations/client	5	50	Unlimited
Maximum addable appliances/client	20	1000	Unlimited
Installation Testers (INST) module	•	•	•
Installation Testers supported	Fluke 1653, Fluke 1653B, Fluke 1654B, Fluke 1662, Fluke 1663, Fluke 1664 FC, Beha-Amprobe ProInstall-100, Beha-Amprobe ProInstall-200		
Maximum addable clients	1	2	Unlimited
Maximum addable sites/client	2	5	Unlimited
Maximum addable locations/client	5	25	Unlimited
Maximum addable appliances/client	50	200	Unlimited
Include demo database	•	•	•
Create clients	•	•	•
Rename clients		•	•
Delete clients	•	•	•
Create nodes	•	•	•
Move nodes	•	•	•
Rename nodes		•	•
Delete nodes	•	•	•
Edit client information		•	•
Edit site information		•	•
Edit location information		•	•
Edit appliance information		•	•
Edit test information		•	•
Add test step		•	•
Delete test step		•	•
Edit test step		•	•



Add remarks		•	•
Add attachment (file) to remark			•
Edit remark		•	•
Delete remark		•	•
Read data from instrument		•	•
Read data from file		•	•
Read data conflict management		•	•
Read data assign tree structure		•	•
Load data to instrument			*Compatible tool required
Use search		•	•
Show reports	With watermark	•	•
Show certificates	With watermark	•	•
Save (PDF, XML,...) /Print reports		•	•
Save (PDF, XML,...)/Print certificates		•	•
Add engineers	Demo engineer	•	•
Edit engineers		•	•
Delete engineers		•	•
Print engineers		•	•
Add test instruments	Demo instrument	•	•
Edit test instruments		•	•
Delete test instruments		•	•
Print test instruments		•	•
Edit my company info	Demo company	•	•
Edit company logo	Demo logo		•
Edit certification logo	Demo logo		•
View Auto Test Codes		•	•
Select favorites Auto Test Codes		•	•
Print favorites Auto Test Codes		•	•

Print All Auto Test Codes		•	•
Create customized Auto Test Codes			•
Edit customized Auto Test Codes			•
Copy customized Auto Test Codes			•
Delete customized Auto Test Codes			•
Print Customized Auto Test Codes			•
Create backup		•	•
Restore backup		•	•
Maximum users	1 Demo user	2	Unlimited
Add users		•	•
Edit users		•	•
User roles		•	•
Edit user roles		•	•
Print users list		•	•
Edit limits		•	•
Available languages	EN, DE, FR, IT, NL		
Supported Installation certificates	DIN VDE 0701-0702, ÖVE/ÖNORM E 8701, SNR 462638, NEN3140, International template		
Change language	•	•	•
Change country	•	•	•
Change report language			•
Expire duration	60 days (calculated from installation date)	Unlimited	
Free updates		5 years (calculated from enter serial code date)	
Expiration popup notice	Daily	Every 30 days after 5 year free update period	
Activation date with days left until expiration	•	•	•

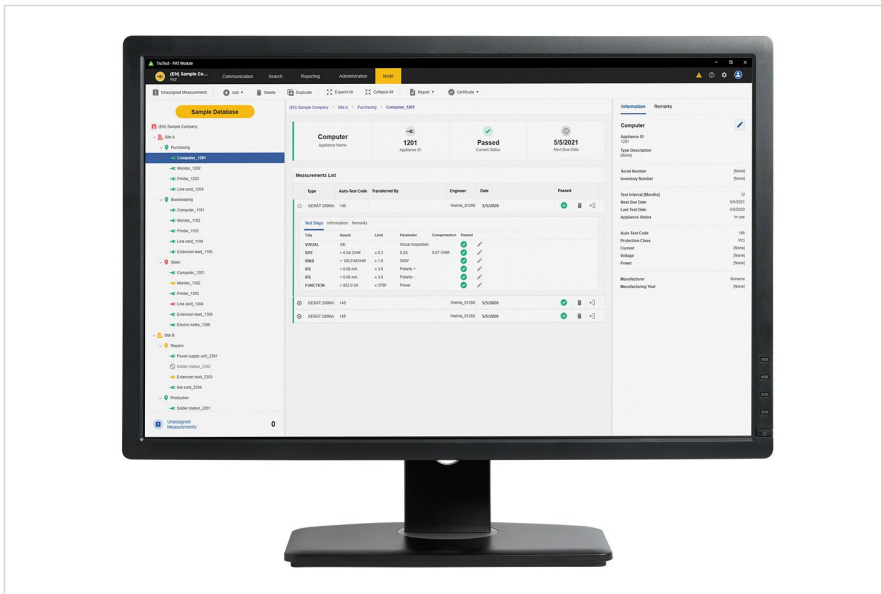
System requirements

Type	Requirement
Operating System	<ul style="list-style-type: none"> • Microsoft Windows 10, 64-bit and 32-bit (recommended) • Microsoft Windows 8/8.1, 64-bit and 32-bit • Microsoft Windows 7 with Service Pack 1, 64-bit and 32-bit



System Memory	Minimum 4 GB RAM (64-bit) or 2 GB RAM (32-bit)
Hard disk space	Minimum 2 GB available hard disk space
Display resolution	Minimum screen resolution 1366 x 768
Communication interfaces	USB

Ordering information



Fluke TruTest Software License Code - Lite

Fluke TruTest Software License Code - Lite

Includes:

- The ability to put TruTest on 1 workstation
- The ability to add 2 users to that TruTest workstation

Fluke TruTest Software Advanced License Code

Fluke TruTest Software License Code - Advanced

Includes:

- The ability to put TruTest on 1 workstation
- The ability to add an unlimited number of users to that TruTest workstation

Fluke TruTest Software Compact Disc

Fluke TruTest Software - CD (Excl. License code)

Includes:

- TruTest Software disc. License code sold separately.

Fluke TruTest Lite Software Advanced License code – 5 pack

Fluke TruTest Software License Code - Advanced - 5 workstations

Includes:

- The ability to put TruTest on 5 workstations
 - The ability to add an unlimited number of users to each of the 5 TruTest workstations
-

Fluke TruTest Lite Software Advanced License code – 10 pack

Fluke TruTest Software License Code - Advanced - 10 workstations

Includes:

- The ability to put TruTest on 10 workstations
 - The ability to add an unlimited number of users to each of the 10 TruTest workstations
-

Fluke TruTest Lite Software License code – 5 pack

Fluke TruTest Software License Code - Lite - 5 workstations

Includes:

- The ability to put TruTest on 5 workstations
 - The ability to add 2 users to each of the 5 TruTest workstations
-

Fluke TruTest Lite Software License code – 10 pack

Fluke TruTest Software License Code - Lite - 10 workstations

Includes:

- The ability to put TruTest on 10 workstations
 - The ability to add 2 users to each of the 10 TruTest workstations
-



Fluke. *Keeping your world up and running.®*

Fluke (UK) Ltd.
52 Hurricane Way
Norwich, Norfolk
NR6 6JB
United Kingdom
Tel.: +44 (0)20 7942 0708
E-mail: cs.uk@fluke.com
www.fluke.com/en-gb

©2022 Fluke Corporation. All rights reserved.
Data subject to alteration without notice.
11/2022

**Modification of this document is not permitted
without written permission from Fluke Corporation.**